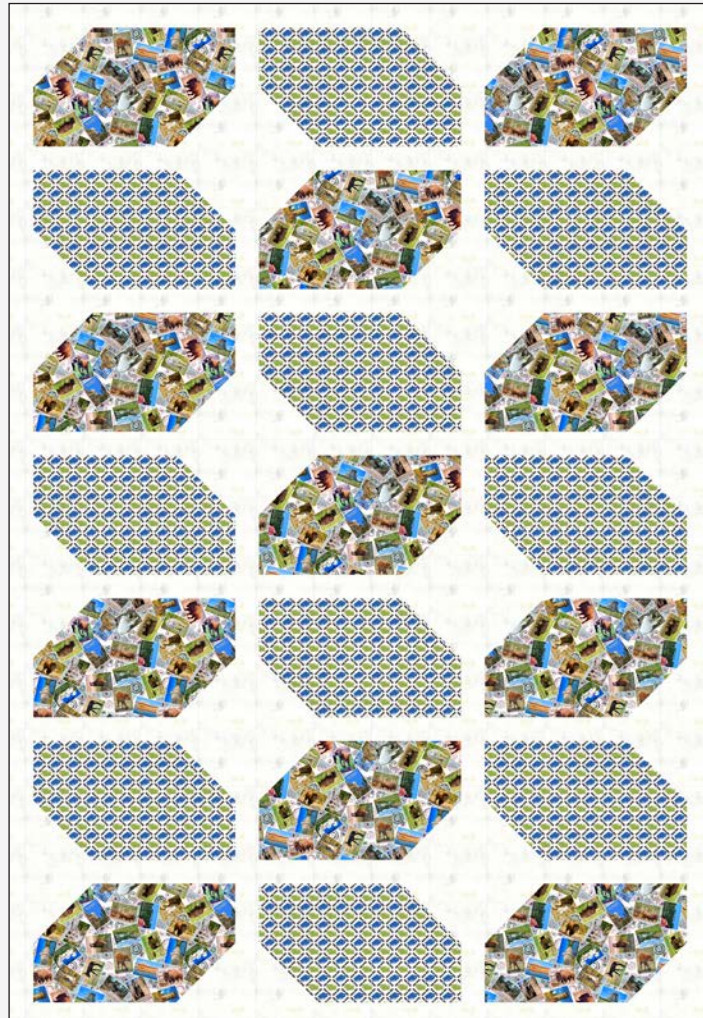


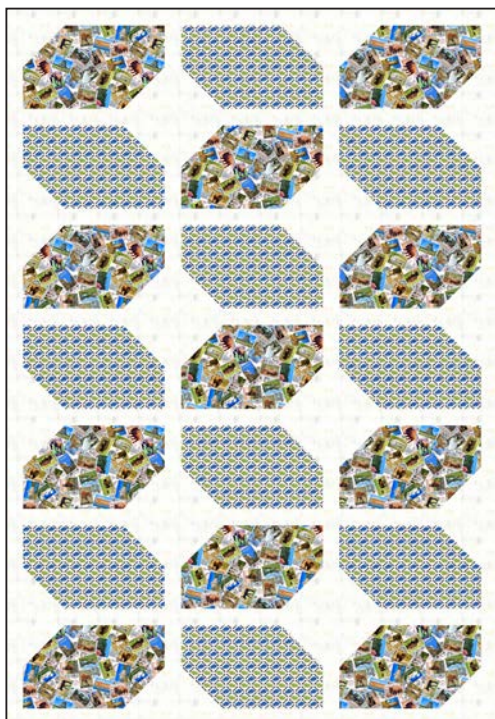
# Color Block



58" x 84" Quilt Pattern



## 2 Color



### Yardage

- 1 ½ yards color 1
- 1 ½ yards color 2
- 3 yards background
- ½ yard binding

### Cutting

#### Block Rectangles - Fat quarters

- (11) 10" x 16½" color 1
- (10) 10" x 16½" color 2

#### Sashing / Borders / Squares - Background

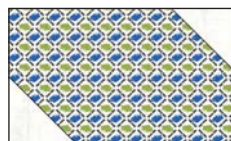
- (12) 2½" x WOF; sub cut;  
(14) 2½" x 10" (Sashing between blocks)
- Sew remaining 2½" x WOF strips end to end;  
(6) 2½" x 52½" (Row sashing);
- (6) 5" x WOF; sub cut;  
(42) 5" sq
- (7) 3½" x WOF; sew end to end; sub cut  
(2) 3½" x 52½" (Top/bottom)  
(2) 3½" x 85" (Side borders)

### Sewing

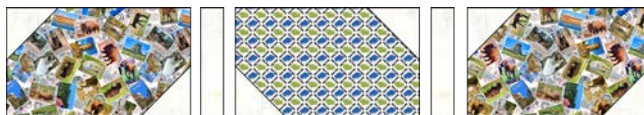
1. Separate rectangles into two stacks with one of each fabric in each stack. One stack will have 11 and one will have 10.
2. Draw a diagonal line from corner to corner on the back of all the 5" squares.
3. Place a 5" square with right sides together, to the top left and bottom right of all the (11) rectangle blocks in stack 1.
4. Sew on the diagonal line to create block.
5. Trim to a ¼" on outside of line; flip and press seam.



6. Place a 5" square with right sides together, to the top right and bottom left of all the (10) rectangle blocks in stack 2.
7. Sew on the diagonal line to create block.
8. Trim to a ¼" on outside of line; flip and press seam.



9. Lay out blocks with 2½" x 9½" sashing between blocks using diagram as reference.

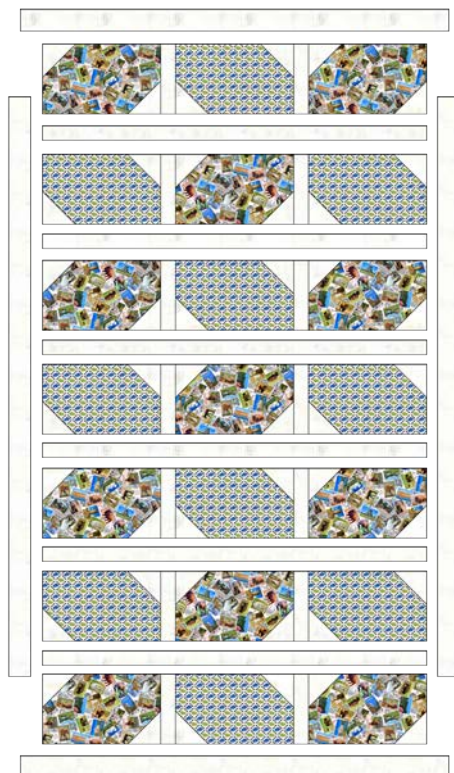


10. Sew rows together.
11. Place sashing between rows and sew all the rows together.
12. Sew top and bottom border on.
13. Sew side borders on.



# Color Block Quilt

## Exploded Diagram



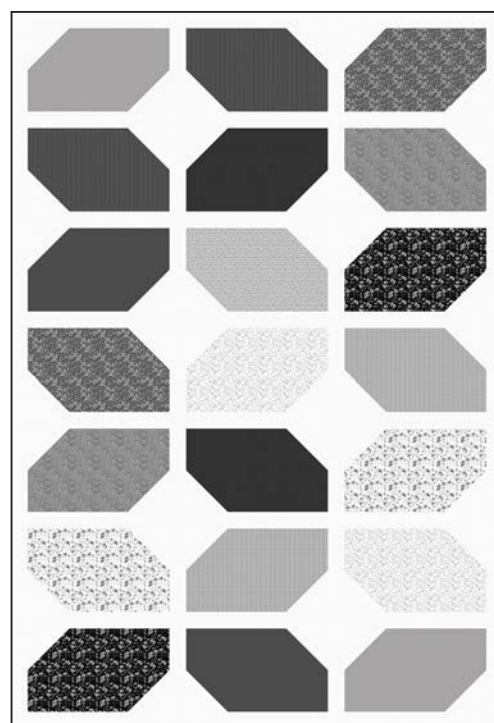
114" x 98" King



## Yardage

- (12) 1/2 yard cuts for blocks
- 4 yards background
- 1 yard binding

## 11 Colors



## Yardage

- 11 Fat quarters (2 blocks per fat quarter) or (6) 1/2 yard cuts
- 3 yards background
- 1/2 yard binding

## Cutting For King Size

### Block Rectangles

- (1) 16 1/2" x WOF; sub cut;  
(4) 10" x 16 1/2" for each color.  
(48) total needed.

### Sashing / Borders / Squares - Background

- (12) 5" x WOF; sub cut (96) 5" sq
- (29) 2 1/2" x WOF sub cut;  
(40) 2 1/2" x 10" (Sashing between blocks)  
Sew remaining end to end and cut the following after piecing rows  
(7) 2 1/2" x 106 1/2" (Row sashing)
- (11) 3 1/2" x WOF; sew end to end; sub cut;  
(2) 3 1/2" x 98 1/2" (Side borders)  
(2) 3 1/2" x 106 1/2" (Bottom/top border)