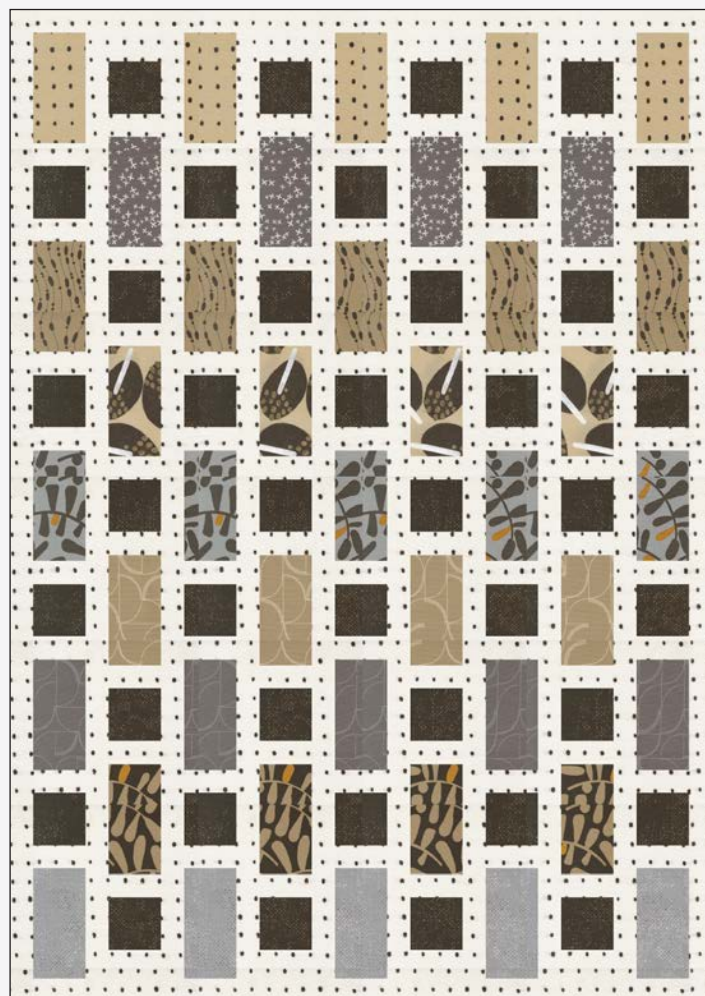


Bippity Bricks

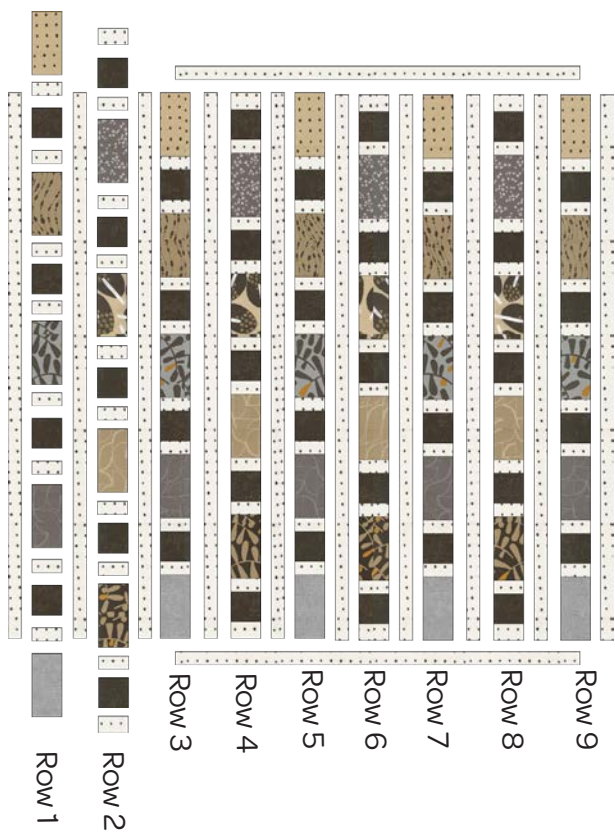


60" × 85" Quilt Pattern



Bippity Bricks

11 Color Design, Cover Quilt



Information

This pattern is Layer Cake and Charm Pack friendly.

For a random colorway, choose a Layer Cake for the main rectangles.

The highlighted area in the cutting diagram is the one used for this pattern.

Yardage

- Main Rectangles:
 - (1) Layer Cake pack (42 pieces - 21 needed)
 - OR (9) Fat Quarters
 - OR (9) $\frac{1}{3}$ yard cuts (one of each color)
- 5" squares:
 - (1) Charm Pack - all one color (40 ct)
 - OR 1 yard of fabric
- Sashing / Borders
 - 2 $\frac{3}{4}$ yards of fabric

Abbreviations

WOF - width of fabric

Cutting

Main Rectangles

Note: Decide with colors will go in which row. Row 1 & 2 are repeat rows. (5) for row 1 and (4) for row 2.

- From 5 Fat Quarters (Rows 1, 3, 5, 7 & 9): Cut (3) 5" x WOF strips lengthwise
 - ⇒ subcut (5) 5" x 10" rectangles each (25 total)
- From remaining 4 Fat Quarters (Rows 2, 4, 6 & 8): Cut (3) 5" x WOF strips lengthwise
 - ⇒ subcut (4) 5" x 10" rectangles each (16 total)

5" Squares

- Cut (5) 5" x WOF strips
 - ⇒ subcut (40) 5" squares

Sashing / Borders

- Cut (24) 2 $\frac{1}{2}$ " x WOF strips. Remove selvages and sew end-to-end.
 - ⇒ Subcut (10) 82" lengths (vertical sashing / side borders)
 - ⇒ Subcut (2) 61" lengths (top/bottom borders)

Measure quilt top in 3 places before cutting final border lengths.

Rectangles between blocks (Same as sashing fabric)

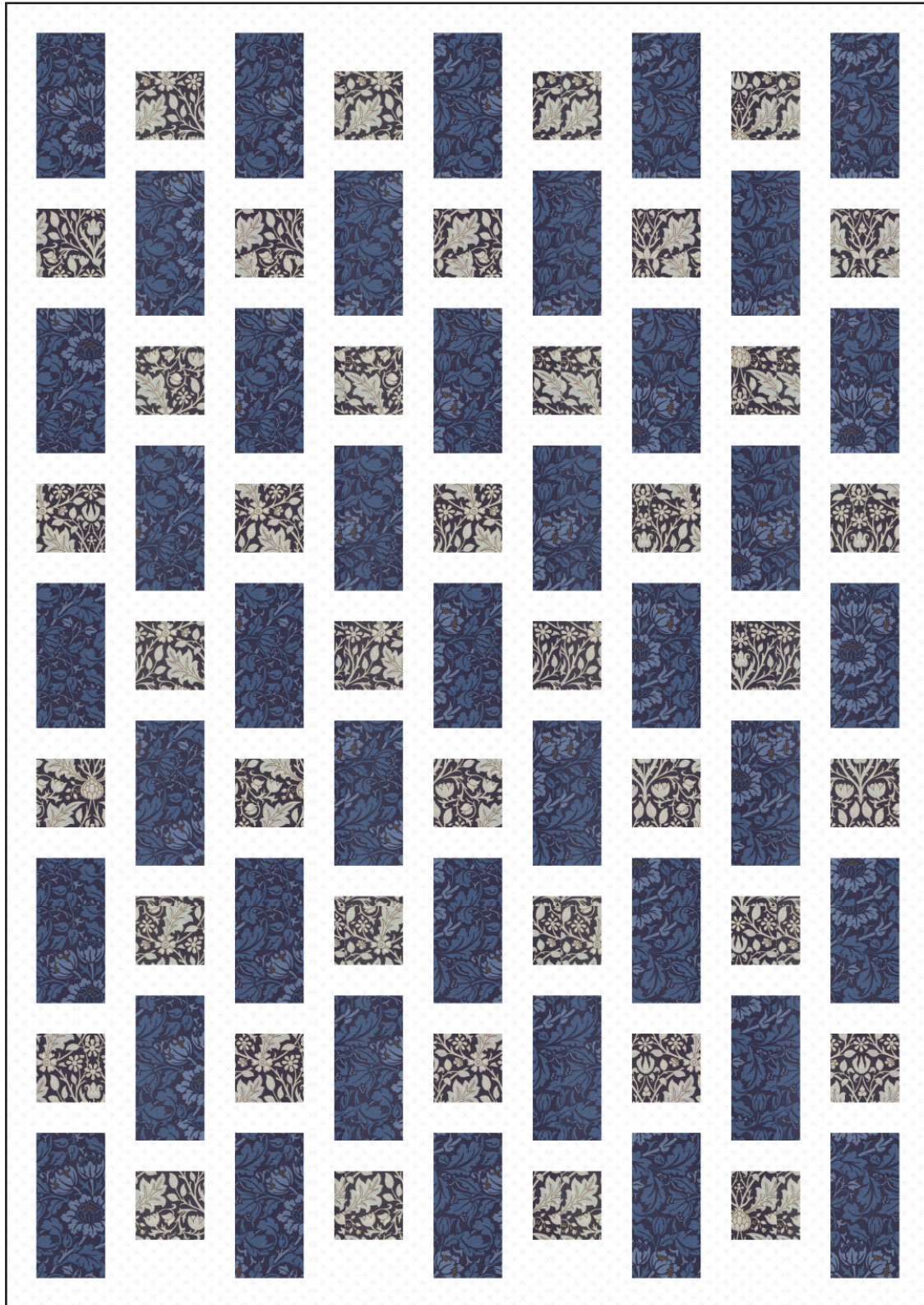
- Cut (10) 2 $\frac{1}{2}$ " x WOF strips ⇒ subcut to (80) 2 $\frac{1}{2}$ " x 5" pieces
- Cut (1) 3" x WOF strip ⇒ subcut to (8) 3" x 5" pieces (for ends of row 2, 4, 6 & 8)

Sewing

1. Lay out Row 1 and Row 2 according to the exploded diagram (upper left). Label fabrics A, B, etc. if using different colors.
2. Sew pieces in each row together in order.
3. Make (5) Row-1 units and (4) Row-2 units.
4. Sew the long sashing strips end-to-end (remove selvages first).
5. Cut sashing/border pieces to exact lengths listed above.
6. Sew vertical sashing strips between the rows.
7. Measure quilt top side-to-side in 3 places (top, middle, bottom). It should measure approximately 61".
8. Cut top and bottom borders to the average of your three measurements.
9. Sew top and bottom borders to complete the quilt top.

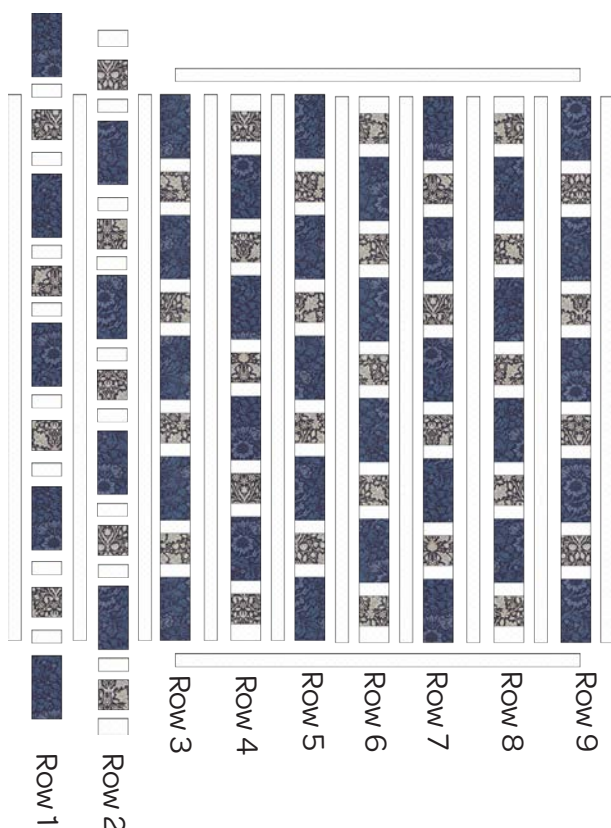
Bippity Bricks

3 Color Design, Twin



Bippity Bricks

3 Color Design Twin



Information

This pattern is Layer Cake and Charm Pack friendly.
For a random colorway, choose a Layer Cake for the main rectangles.

The highlighted area in the cutting diagram is the one used for this pattern.

Yardage

- Main Rectangles:
1 $\frac{3}{4}$ yards total (one fabric)
- 5" squares:
(1) Charm Pack - all one color (40 needed)
OR 1 yard

Sashing / Borders
2 $\frac{3}{4}$ yard of fabric

Abbreviations

WOF - width of fabric

Cutting

Main Rectangles

- Cut (11) 5" x WOF strips \Rightarrow subcut (41) 5" x 10" rectangles

5" Squares

- Cut (5) 5" x WOF strips \Rightarrow subcut (40) 5" squares

Sashing / Borders

- Cut (24) 2 $\frac{1}{2}$ " x WOF strips. Remove selvages and sew end-to-end.
 \Rightarrow Subcut (10) 82" lengths (vertical sashing / side borders)
 \Rightarrow Subcut (2) 61" lengths (top/bottom borders)

Measure quilt top in 3 places before cutting final border lengths.

Rectangles between blocks

(Same as sashing fabric)

- Cut (10) 2 $\frac{1}{2}$ " x WOF strips \Rightarrow subcut (80) 2 $\frac{1}{2}$ " x 5" pieces
- Cut (1) 3" x WOF strip \Rightarrow subcut (8) 3" x 5" pieces (ends of Rows 2, 4, 6 & 8)

Sewing

1. Lay out Row 1 and Row 2 according to the exploded diagram (upper left). Label fabrics A, B, etc. if using different colors.
2. Sew pieces in each row together in order.
3. Make (5) Row-1 units and (4) Row-2 units.
4. Sew the long sashing strips end-to-end (remove selvages first).
5. Cut sashing/border pieces to exact lengths listed above.
6. Sew vertical sashing strips between the rows.
7. Measure quilt top side-to-side in 3 places (top, middle, bottom). It should measure approximately 61".
8. Cut top and bottom borders to the average of your three measurements.
9. Sew top and bottom borders to complete the quilt top.

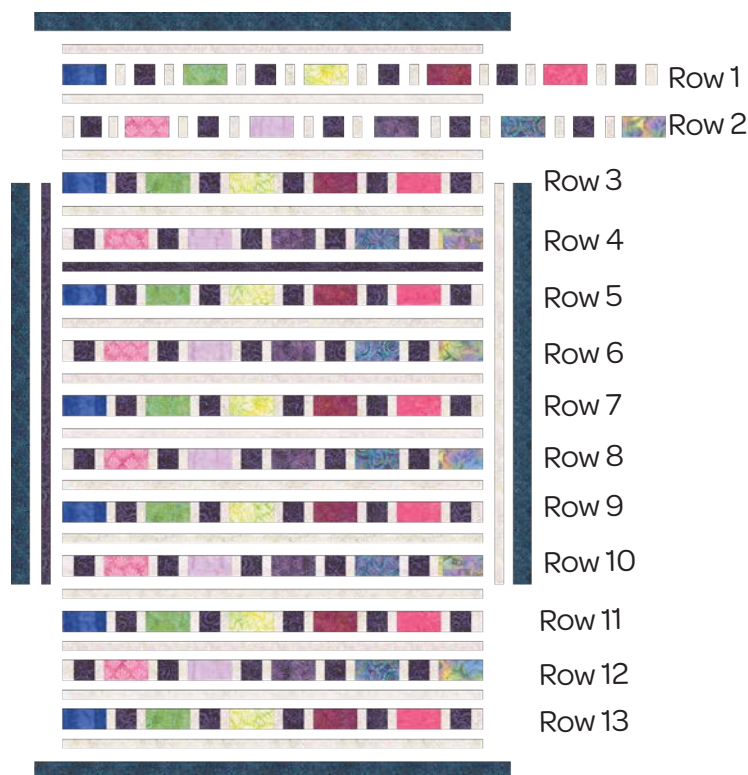
Bippity Bricks

14 Color Design, Queen 102" x 94"



Bippity Bricks

14 Color Design, Queen



Information

This pattern is Layer Cake and Charm Pack friendly.
For a random colorway, choose a Layer Cake for the main rectangles.

The highlighted area in the cutting diagram is the one used for this pattern.

Yardage

- Main Rectangles:
 - (1) Layer Cake (42 pieces – 33 needed)
 - OR (15) Fat Quarters (you will need 5 duplicates for the design shown)
 - OR (10) $\frac{1}{3}$ -yard cuts (different color each)
- 5" squares:
 - (2) Charm Pack - all one color
 - OR 1 $\frac{1}{2}$ yards
- Sashing / Inner Borders (background)
 - 4 yards
- Outer Border
 - 1 $\frac{1}{2}$ yards

Abbreviations

WOF - width of fabric

Measure quilt top in 3 places before cutting final lengths.

Cutting

Main Rectangles

Note: Rows 1 & 2 are repeated. You need (7)

Row-1 sets and (6) Row-2 sets.

- From 5 colors (Rows 1,3,5,7,9,11,13): Cut (2) 5" x WOF strips \Rightarrow subcut (7) 5" x 10" rectangles each
- From 5 colors (Rows 2,4,6,8,10,12): Cut (2) 5" x WOF strips \Rightarrow subcut (6) 5" x 10" rectangles each

5" Squares

- Cut (9) 5" x WOF \Rightarrow subcut into (65) 5" squares

Sashing / Inner Borders

- Cut (35) 2 $\frac{1}{2}$ " x WOF strips. Remove selvages and sew end-to-end.
 - \Rightarrow Subcut (14) 91" lengths (vertical sashing / side inner borders)
 - \Rightarrow Subcut (2) 87" lengths (top/bottom inner borders) **

Rectangles between blocks (Same as sashing fabric)

- Cut (17) 2 $\frac{1}{2}$ " x WOF strips \Rightarrow subcut (117) 2 $\frac{1}{2}$ " x 5" pieces
- Cut (2) 3" x WOF strips \Rightarrow subcut (13) 3" x 5" pieces (ends of even rows)

Outside Border

- Cut (10) 4 $\frac{1}{2}$ " x WOF strips. Remove selvages and sew end-to-end.
 - \Rightarrow Subcut (2) 102" lengths (top/bottom outer ** borders)
 - \Rightarrow Subcut (2) 87" lengths (side outer borders) **

Sewing

1. Lay out Row 1 and Row 2 according to the exploded diagram (upper left). Label fabrics A, B, etc. if using different colors.
2. Sew pieces in each row together in order.
3. Make (7) Row-1 units and (6) Row-2 units.
4. Sew the long sashing strips end-to-end (remove selvages first).
5. Cut sashing/border pieces to exact lengths listed above
6. Sew vertical sashing strips between the rows
7. Measure quilt top side-to-side in 3 places. It should measure 87"
8. Cut inner top/bottom borders to the average of your measurements and attach.
9. Attach side inner borders.
10. Repeat measurement process for outer border; cut and attach outer borders to complete the quilt top..